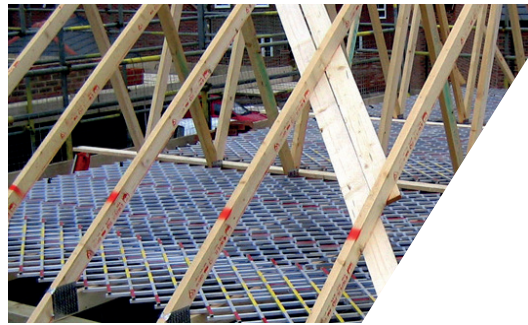




CoverSafe



To prevent falls when spreading roof trusses, fitting wind braces, or working on a girder truss or hip roof construction

COVERSAFE

ROOF SAFETY MATTING

METHOD STATEMENT FOR THE DEPLOYMENT OF THE COVERSAFE

STEP 1 - POSITION THE SET-UP MAT

- Stand on the general access scaffold.
- Expand Set-up mat(s) to the required size; strap each to fix it to the required dimensions.
- Position the first & second trusses at gable end.
- Place the set-up mat internally on top of the truss chords.
- Step up onto the set-up mat and jam the spacer bar into position; this forms a temporary barrier whilst holding trusses at 600mm.
- Continue with the next truss, move set-up mat; repeat as above and fix external wind brace.



STEP 2 - INSERT FIRST MAIN STANDARD MAT

- From the scaffold access, position a closed Standard mat with one end along the nearest rafter; blue CoverSafe sign to be visible (on top) and facing you.
- Insert hook of telescopic pole into far side of mat; extend mat by pushing pole away until the mat is across 6 or 7 rafters.
- Adjust position of mat to leave no gaps between edges of trusses, brickwork, etc.
- Secure near end of mat to rafter with quick release strap.



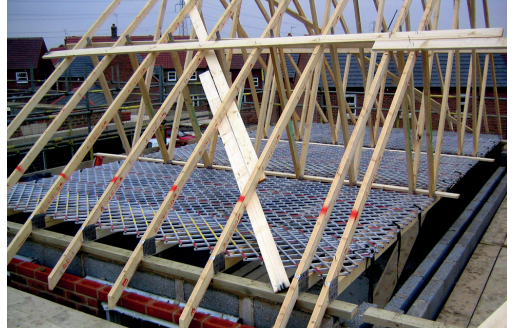
STEP 3 - INSERT ADDITIONAL STANDARD MAT(S)

- Where wider coverage is required, place a second mat alongside the first and ensure that mats are positioned to interlock.
- If an overlap is required, place an opposite mat (CoverSafe yellow coloured sign); the mats will interlock with a minimal difference in levels.
- Secure near end of second mat to rafter with quick release strap.
- When area is filled and protected with mats, move out onto the mats and tie off the far end.



STEP 4 - USING COVERSAFE SAFETY MATS

- The CoverSafe mats now form a fall prevention platform.
- Once in position, each mat will easily take the weight of one man and some materials.
- Work on the bracing using the CoverSafe as a stable light working platform.



DO'S

- 1 Always support short edges of mats over a rafter.
- 2 Use only trained, individually authorised, people to place CoverSafe mats in position.
- 3 Look for damage to mats; if there is damage remove mats from use and notify Oxford Safety Ltd for repair service.

DON'TS

- 1 Never leave unsupported overhangs of mats.
- 2 Don't lift mats by placing fingers between bars; grip mat at edges. Mats have a closure prevention device but fingers could be pinched when between bars.
- 3 Don't load out and store materials on mats.

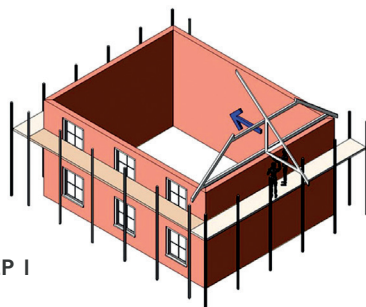
COVERSAFE

ROOF SAFETY MATTING

METHOD STATEMENT FOR THE DEPLOYMENT OF THE COVERSAFE

STEP 1 - POSITION GIRDER TRUSS

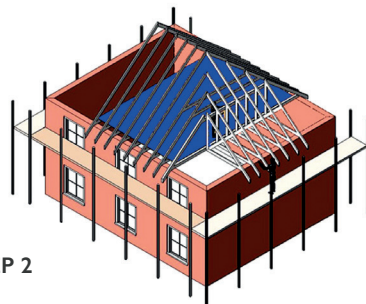
- Prepare girder truss (on ground) and fix ALL hangers in place ready to receive mono trusses.
- Place girder at gable end, de-chain from scaffold; then slide truss into final position.



STEP 1

STEP 2 - POSITION INTERNAL TRUSSES

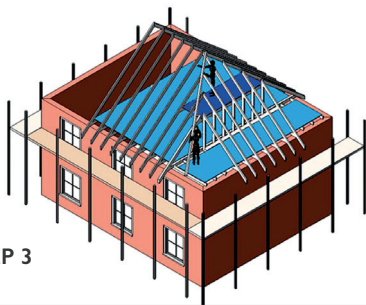
- Spread internal trusses using Set-up mat (as basic CoverSafe method statement).
- Deck out trusses with Standard mats from wall plate (as basic CoverSafe method statement).
- Position second girder truss at far gable end (method as above).



STEP 2

STEP 3 - FIX MONO TRUSSES & CEILING RAFTERS

- Infill the mono trusses.
- Fix in position the ceiling rafters.
- Deck out the mono trusses and the ceiling rafters with mats (as before).

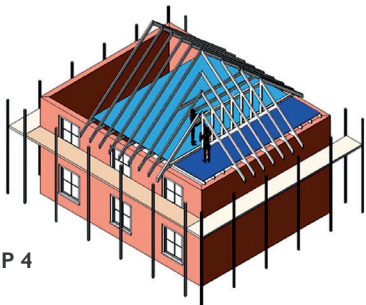


STEP 3

STEP 4 - FIX HIPPS

- Fix hips, working on safety platform formed by upper layer of CoverSafe mats.

Note: It is recommended that the following operations are carried out by two people.



STEP 4

TRANSPORTATION & MANUAL HANDLING

- The CoverSafe mats can be transported to the site in a van or secured tightly to the roof-rack of a car.
- Usually, a set-up mat, a spacer bar and a number of standard mats will be deployed.
- A typical CoverSafe mat weighs 11kg and can be manually handled by one person.
- Use mechanical aid to lift them up to the general access scaffold platforms.

COVERSAFE SIZE & WEIGHT

CLOSED SIZE: 0.75m X 0.98m

OPEN SIZE: 3.6m X 0.7m, COVERS 2.4m²

MAXIMUM SPREAD LOAD: 150kg

NB: Open sizes are typical because each mat can be adjusted to the best rectangular shape to give the optimum cover for each situation.



Safety Note:

The maximum span between rafters must not exceed 600mm.
The CoverSafe mats are designed to prevent falls and thus protect operatives.
Do not load out the mats with materials. Maximum spread load is 150kg per mat.